

FIRST FLOOR

Westin Providence

Hotel Reg
Desk

skirted
registration area
SETUP BY FRIDAY

Escalator to
2nd floor

lobby

Main
Rotunda
Lobby

driveway

Narragansett Prefunction

Narragansett A

Ticket Sales,
Will Call, &
NELA Info

6 BTNG

6 Femdom
Circle

6 Sterling Club

VASE 6

Bay State
Marauders 6

MaST
Transcending
Boundaries 6

Network/LaRed 6

MOB 6

NCSF

These tables,
just drape
no skirts
setup by
SATURDAY
9am

6 Choice
Social
Club

6 The Society

6 NE Hypno
SIG

Fleamarket
Coat
Check

(door)

schoolrooms

Entrance to all
Narragansett
classrooms

VERSION: 3.1
Date: 2/3/12



WESTIN SECOND FLOOR LAYOUT

To Parking Garage

Program Ops/
presenter
green room

Escalator to street

phone booths

Waterplace Ballroom

hallway

Gusto Cafe

Restrooms

ROTUNDA

public access

DRAPE

DRAPE

Restaurant Annex
inside

Security
Person

CENTRO RESTAURANT
ENTRANCE

Escalator from 1st floor

Can bootblack
risers be set up
Friday by 5pm?

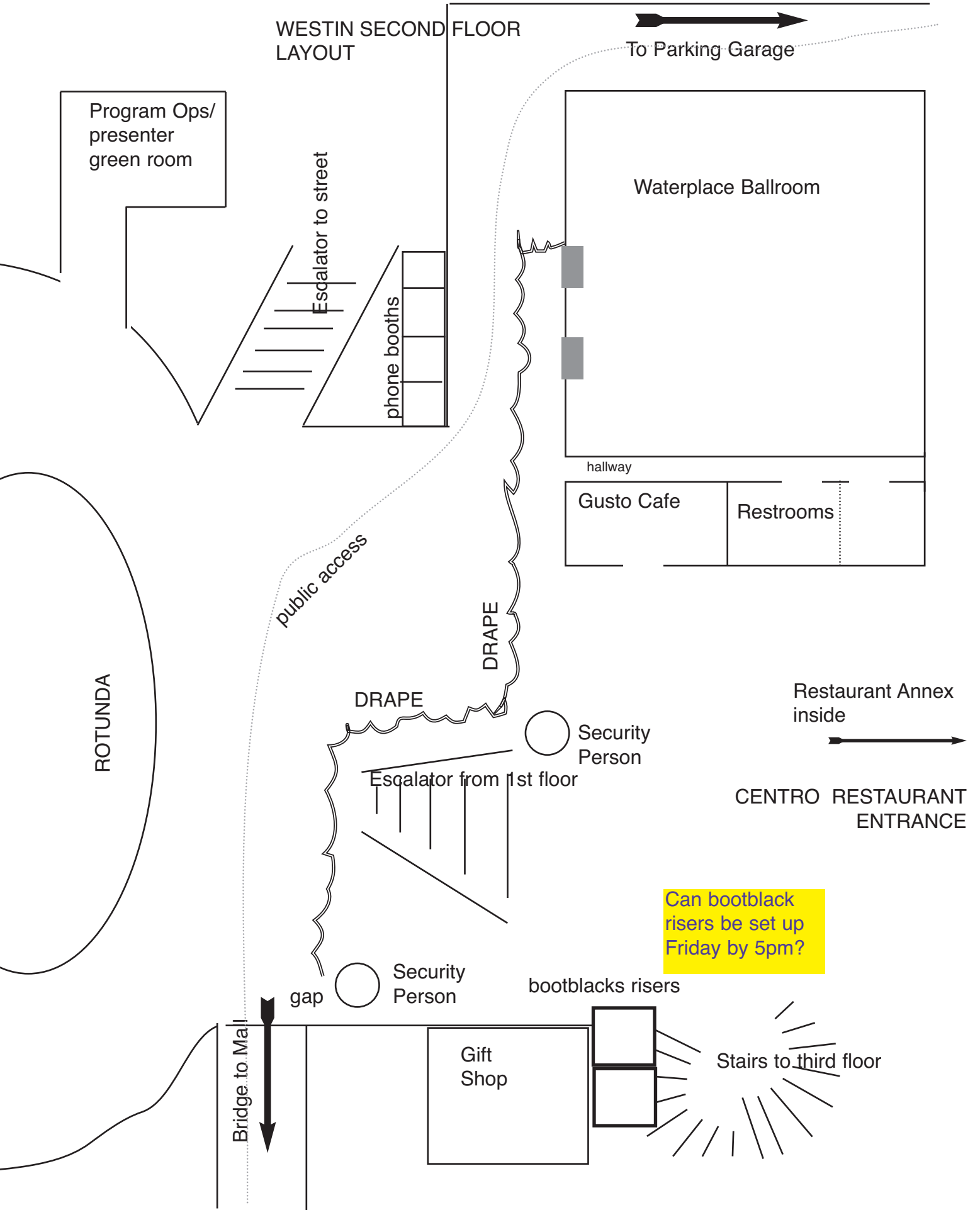
Security
Person

bootblack
risers

Bridge to Mall

Gift
Shop

Stairs to third floor



SECOND FLOOR

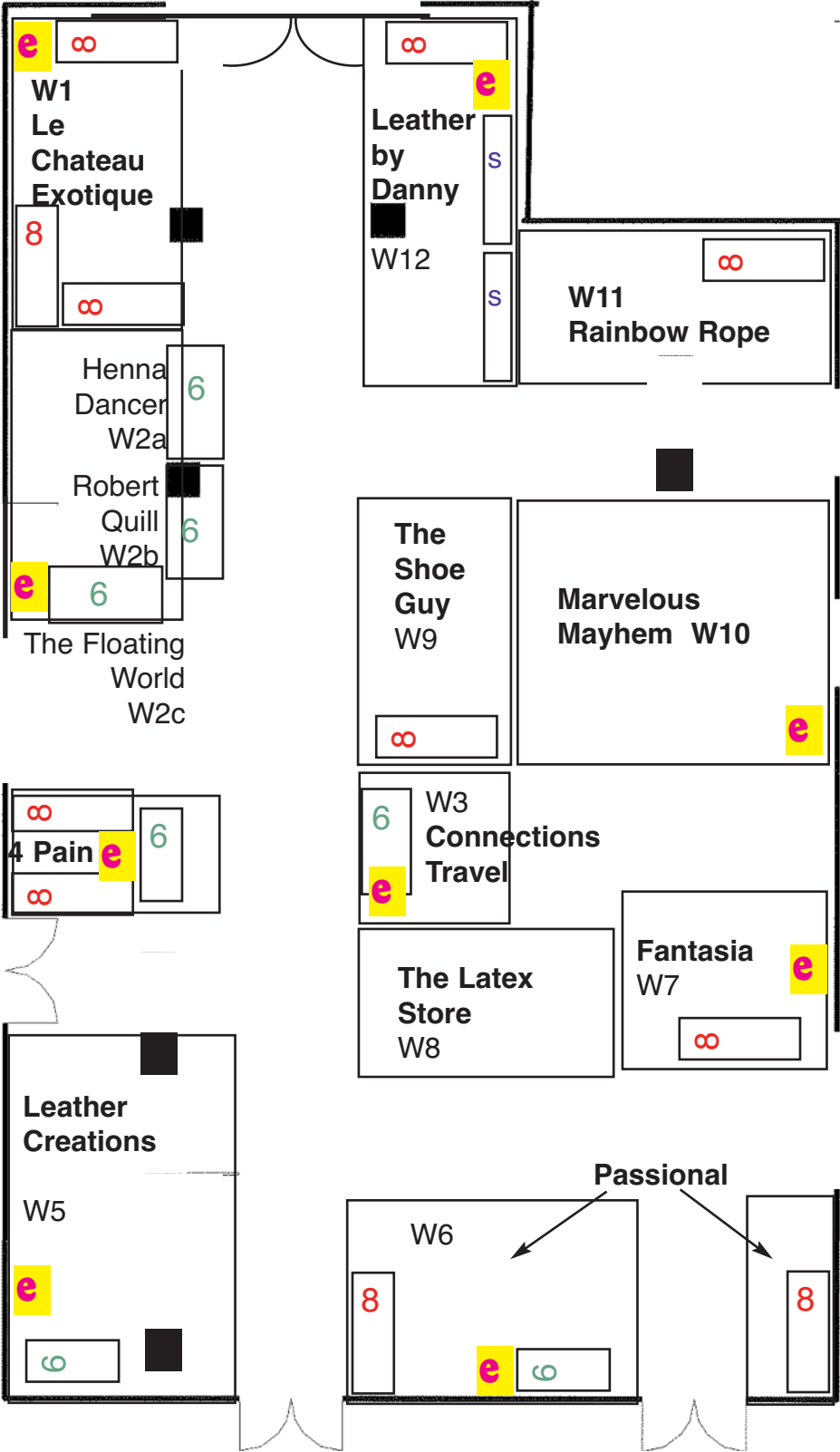
Parking garage
entrance



Waterplace Ballroom



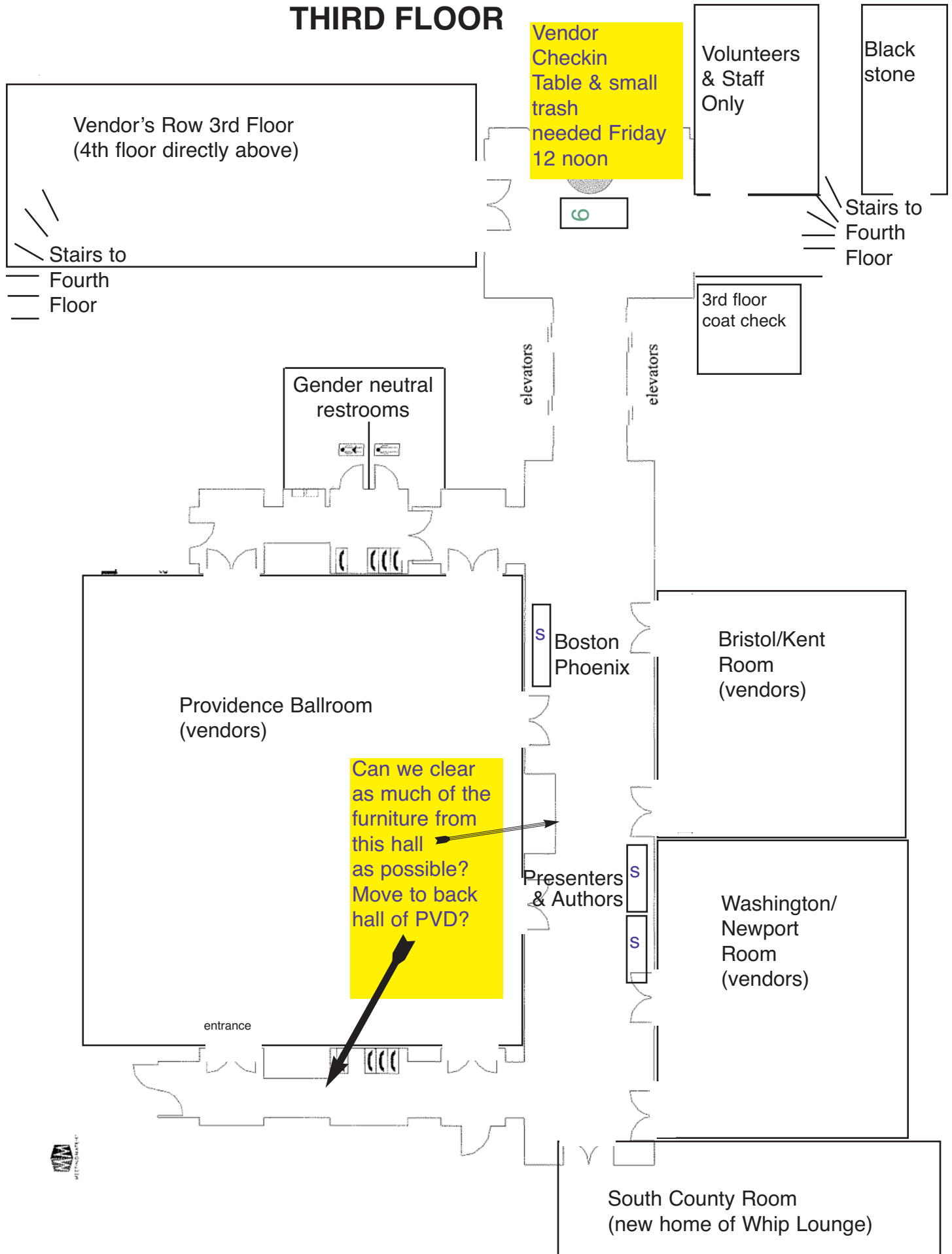
Main
Hallway



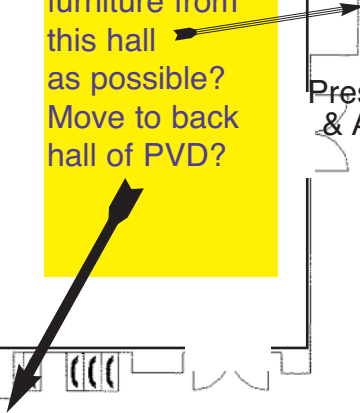
Escalators up
from lobby



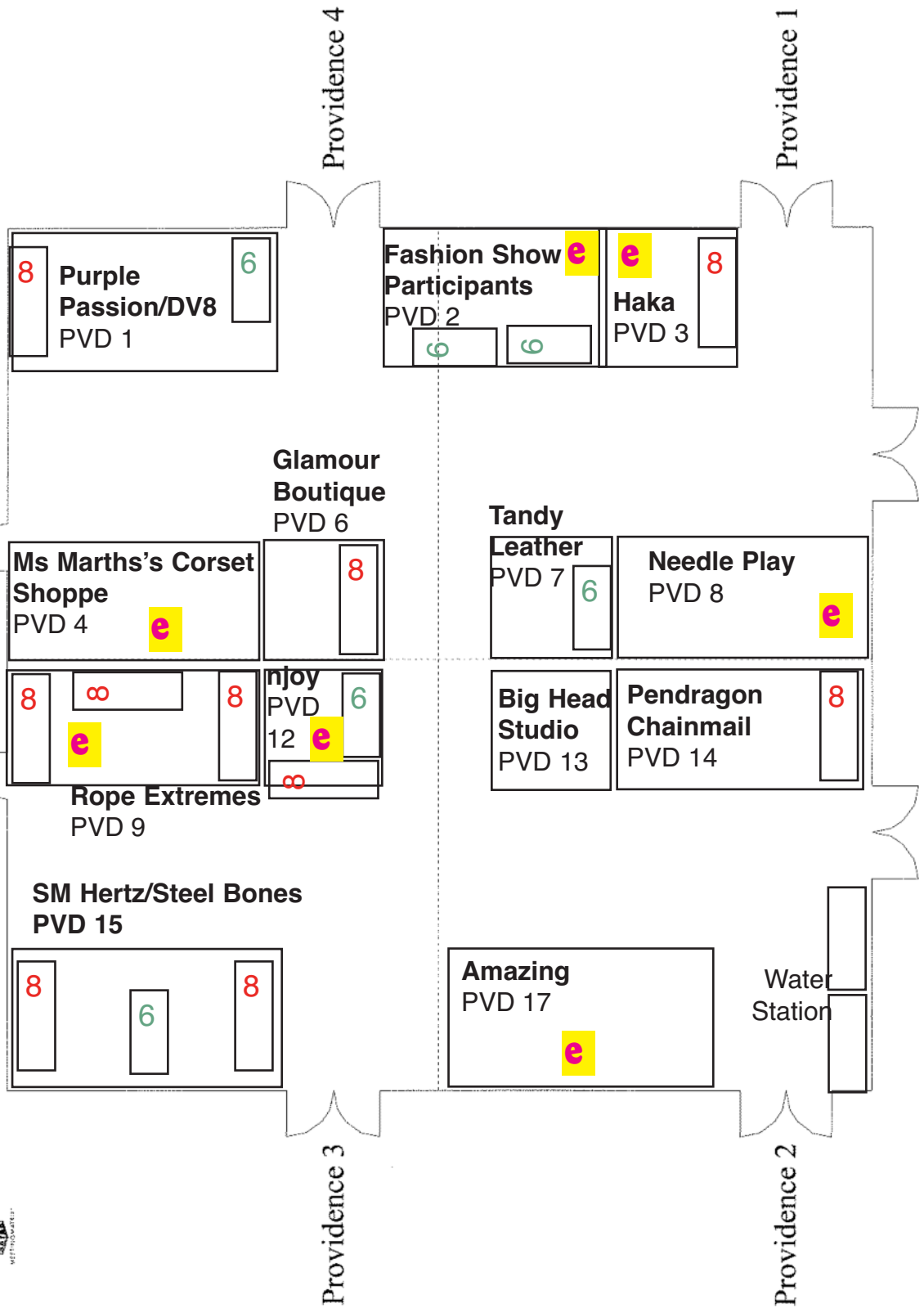
THIRD FLOOR



Can we clear as much of the furniture from this hall as possible? Move to back hall of PVD?



Providence Ballroom



Bristol / Kent

Kent

Bristol

Latex Nemesis
Kent 5

6

Lust Beads
Kent 6

6

ReMarkable Blackbird
Kent 4

6

NE Arts & Crafts Alliance
Kent 2

6

| | | |
|---|------------------------------------|---|
| ∞ | ∞ | |
| 6 | Violet Wand Store Kent 7 | 6 |
| | e | |

| | | |
|---|--|---|
| 6 | For Your Nymphomation Lust in Case Bristol 1 | 6 |
| | e | |

Rubio Leather
Bristol 2

| |
|---|
| 6 |
| Whipsider Rubberworks Bristol 3 |
| 6 |

Kink Academy
Bristol 4

| | | |
|--|---|--|
| | e | |
|--|---|--|

Princess Kali's Secondhand
Bristol 5

closet



Newport / Washington

Washington

| | | | | |
|---------------------------------|----------|----------|--------------------------------|----------|
| KJ Canes Washington 1 | e | 6 | DeTails Washington 3 | 8 |
|---------------------------------|----------|----------|--------------------------------|----------|

| | |
|----------|-------------------------------|
| 6 | TotemX Washington 2 |
|----------|-------------------------------|

| | | | |
|----------|----------|--|------------------------------------|
| 6 | 8 | Dominance Loving Leather Newport 2 | Mercy Floggers Newport 2 |
|----------|----------|--|------------------------------------|

Newport

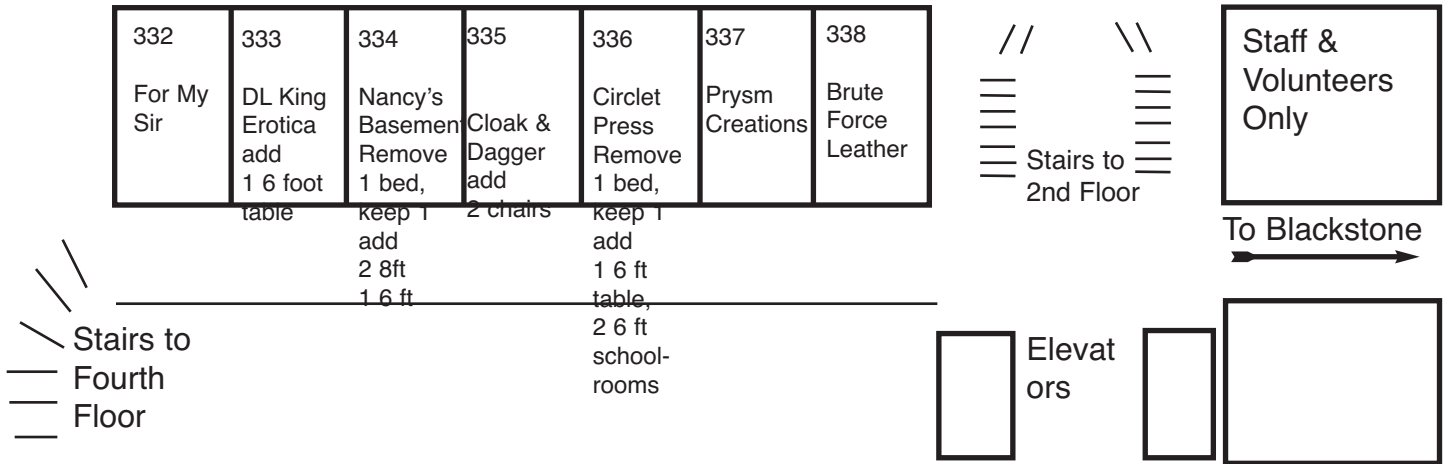
| | |
|----------|--------------------------------------|
| 6 | NotNilla Designs Newport 1 |
|----------|--------------------------------------|

| | | | |
|-------------------------------------|--|---|----------|
| ∞ | The Dragons Design Newport 5 | Andre Whips by Ms V Newport 6 | 6 |
| Sunspot Designs Newport 4 | | | |

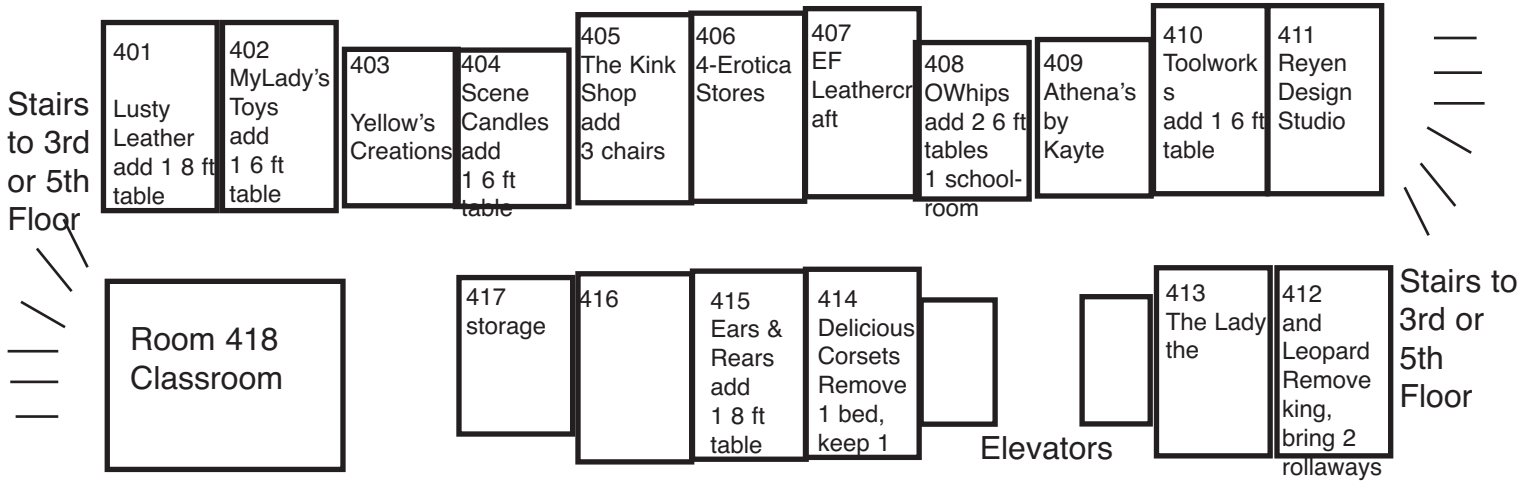


VENDOR'S ROW 3rd, 4th & 5th Floors

Third Floor Room Vendors



Fourth Floor Room Vendors



Fifth Floor Room Vendors

